



**18<sup>th</sup>**  
**COLONY**  
**OF ARTISTS**  
**ARTS**  
**FESTIVAL**  
**2023**

**Abbeyhill, Edinburgh**

**16th - 17th September**  
**11am - 6pm**

**CORNELIUS**

**BEER & WINE  
EASTER RD.  
EDINBURGH**

## WELCOME TO THE 18TH ANNUAL ABBEYHILL COLONY OF ARTISTS EXHIBITION 2023

What an extraordinary last couple of years we have had and we are incredibly grateful to each and every one of you for your support during this time. Covid has left its mark on COA and while many artists continue to exhibit in their gardens rather than their own homes, this unique community event continues to thrive and grow.

As our festival grows we're delighted to welcome 75 artists from a wide and exciting range of disciplines exhibiting in over 40 venues. New for 2023 we have junior exhibitors (under 14's) at Venue 6 and 31. We are delighted to support the talent of the future!

The Hive Festival Hub at Holland House on Rossie Place is back again this year with fantastic food available from The Safari

Lounge, our own COA Beer from Campervan Brewery and live music to whet your appetite!

**Use the map** on pages 20 and 21 to navigate the Colony streets where you'll see our new Bee Logo Boards and green venue numbers indicating the location of our exhibiting artists.



**Our message** to individuals is always be kind, have fun and enjoy this rather special, unique event. We are so happy that you continue to support us and join the Abbeyhill Colonies family for the weekend.



### CONTENTS

Welcome	01	Map of the Colonies	20
The Hive Festival Hub	03	The Colony of Artist's Story	24
Artists	04	The History of the Colonies	27
Events	17	Mural Trail	29





# CAMPERVAN BREWERY.

FIND US ALL WEEKEND, SERVING UP THE OFFICIAL COLONY OF ARTISTS BEER,  
JUST LOOK OUT FOR THE CAMPERVAN!



## LOST IN LEITH

BAR & FERMENTARIA  
82 COMMERCIAL ST, EDINBURGH

## CAMPERVAN BREWERY

TAPROOM & BEER GARDEN  
112 JANE STREET, EDINBURGH

[WWW.CAMPERVANBREWERY.COM](http://WWW.CAMPERVANBREWERY.COM)

@campervanbrew    @TheCampervanBrewery



## THE HIVE FESTIVAL HUB AT HOLLAND HOUSE

Art, food, drink and music... you'll find it all at the Hive Festival Hub at Holland House at the end of Rossie Place, open from 11am daily. It's sure to be buzzing all day!

### Food and Drink

Spot the vintage VW campervan and join us for an "Upper & Lower" the official COA festival beer at the Campervan Brewery pop-up bar where there is plenty of room to sit back and relax! At the Hive Festival Hub you can also chow down on food which will be available to order direct to your table from our friends at The Safari Lounge.

### Live Music

Folk, acoustic, traditional and much more! It's music at its foot-tapping best. Jiggin' starts at noon each day and goes until 6pm.

### Good to Know Facts

At the Hive Festival Hub you will find public loos – please be considerate and tidy up after yourself. The Hive Festival Hub is also the home to our RAFFLE table, the Abbeyhill Historic Photo exhibition and the meet up spot for our free Abbeyhill Street Art & History Tours. See pages 18 and 19 for more details.



01



**SYLWIA KOLASINSKA**  
Mud Station Pottery, 16 Montrose Terrace  
Functional Ceramics & Pottery

02



**ANTONIA GALLACHER**  
Art and Vintage, 3 Lyne Street  
Mixed Media

03



Ginger Twist Studio

**GINGER TWIST STUDIO**  
11 London Road  
A Wee Bijou Wool Shop

04



**ZEPHIRINE DESIGNS**  
30 Maryfield  
Handmade Gold & Silver Jewellery

05



**3SEVENGALLERY.COM**  
52 Maryfield  
Scottish Artist & Creator

05



**PAPA CHARLIE'S DUCKS**  
52 Maryfield  
Engineering & Art Combined

06

SUNDAY ONLY

**EMILA BARBIROU**23 Alva Place  
Acrylic Paintings

07

**BISCOCHO**41 Alva Place  
Functional Stoneware Ceramics

08

**PAUL ISSACS**43 Alva Place  
Colony Watercolours

08

**CAROLINE FINN**43 Alva Place  
Drawings & Paintings of Wildlife

08

**A. IRWIN**43 Alva Place  
Mixed Media Works on Paper

09

**ANNA DITTMANN**13 Alva Place  
Illustrator



10

**JESÚS VELA**  
15 Alva Place  
Multidisciplinary Audiologist



11

SUNDAY ONLY

**ALBADAWNART**  
31 Lady Menzies Place  
Printmaker & Screenprints



12

**LAUREN EMMY BOWMAN**  
25 Regent Place  
Paintings, Prints & Jewellery



12

**CLAIRE BURNETT**  
25 Regent Place  
Art Prints & Handmade Jewellery



13

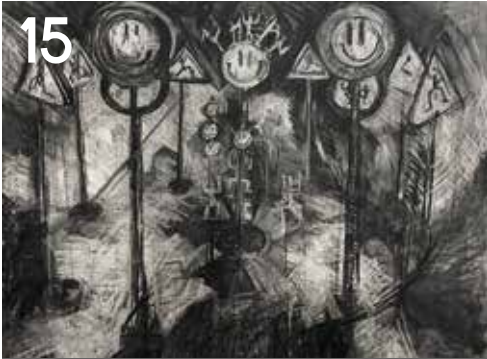
**ANNE MCGREGOR**  
15 Lady Menzies Place  
Plants & Crafts



14

**CARMEN CARMELI**  
14 Lady Menzies Place  
Paintings: Earths, Quartz & Pigments





15

**JILL MARTIN BOUALAXAI**  
12 Lady Menzies Place  
Imagined Archaeologies: Drawings



16

**EDI. REFUGEE SPONSORSHIP CIRCLE**  
42 Regent Place  
Home Baked Syrian Sweets & Cakes



17

**HAMISH KALLIN**  
1 Regent Place  
Pen & Ink/Prints



17

**PHOEBE BOWMAN**  
1 Regent Place  
Mixed Media Artist



18

**BOWBEER DESIGNS**  
45 Waverley Place  
Ceramics & Linocut Prints



18

**GINA BURGESS DESIGN**  
45 Waverley Place  
Bespoke Contemporary Jewellery



19

**LISA MALLON**  
7 Regent Place  
Crafty Cat Lady Handmade Novelties



19

**PIPPA BROWN**  
7 Regent Place  
Vibrant Sunset Oil Paintings



19

**JAY FRAZER CERAMICS**  
7 Regent Place  
Wheel Thrown Pottery



20

**LUCY FREEMAN**  
9 Regent Place  
Botanical Embroidery Artist



21

**ALEX CRAIU**  
37 Waverley Place  
Digital Illustration



21

**STAMPED CAT**  
37 Waverley Place  
Handmade Block Prints

22



**HEATHER REA**  
30 Waverley Place  
Paintings, Drawings & Bookmarks

22



**ROSLIN POTTERY**  
30 Waverley Place  
Nature Inspired Ceramics

23



**TESS GLEN**  
17 Regent Place  
Paintings, Drawings & Words

24



**BURNT PAW**  
24 Waverley Place  
Psychedelic Artist & Musician

25



**POLLY BENNETT**  
33/1 Rossie Place  
Sculpture, Paintings & Drawings

26



**CRAFTS BY CRANG**  
18 Waverley Place  
Prints, Jewellery & Clay Models

26



**MITS MAKES**  
18 Waverley Place  
Colourful Zines & Crafts Galore!

27



**OLDMANGREY ILLUSTRATION**  
12 Waverley Place  
Illustrated Animal Cards & Gifts

28



**AINSLEY FRANCIS**  
9 Waverley Place  
Engraved Glass & Mosaic

29



**JOANNA**  
35 Carlyle Place  
Nature Inspired Prints

30



**LDG JEWELLERY**  
37 Carlyle Place  
Sterling Silver Jewellery

30



**ANNE MARIE'S CUPCAKES**  
37 Carlyle Place  
Homemade Cupcakes



### 31 MINI MOONBEAMS

41 Carlyle Place  
Cards, Papier-mache & Mobiles



### 32 GILL SMITH

3 Waverley Place  
Watercolours Featuring Flowers



### 33 LORRAINE PRITCHARD

43 Carlyle Place  
Mask Maker



### 33 ALAN RAMSAY

43 Carlyle Place  
Next Door's Cat & Model Trains



### 33 ALISON WRIGHT

43 Carlyle Place  
Abstract Painting



### 33 GEORGE PERRY POTS

43 Carlyle Place  
Gas Fired Pottery

34



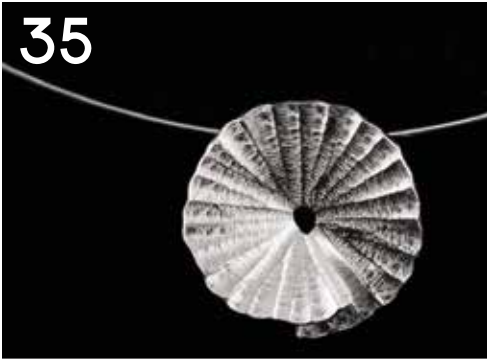
**NIESH STUDIO**  
5 Carlyle Place  
Vintage Clothing & Home Decor

35



**FLOTSAM & JETSAM CRAFTS**  
7 Carlyle Place  
Beach Combed Art & Greetings Cards

35



**VICTORIA MURRAY**  
7 Carlyle Place  
Silver & Copper Jewellery

36



**CHRISTINA ROBERTSON**  
9 Carlyle Place  
Hand Pulled Screen Prints

36



**BACK FROM THE BEACH**  
9 Carlyle Place  
Sea Glass Jewellery

37



**JONAS LAUGS - JFML**  
10 Carlyle Place  
Illustration



37

**NIKA NOVICH**  
10 Carlyle Place  
Weaver of Dreams



38

**JENNY HASLIMEIER**  
15 Carlyle Place  
Botanical & Wildlife Artist



38

**EDDSCAPE**  
15 Carlyle Place  
Mixed Media: Pop Culture & Landscape



39

**WILLIAM MAZUR**  
16 Carlyle Place  
Acrylic on Canvas



39

**CLARE MCCRORY HERALDIC ARTIST**  
16 Carlyle Place  
Initials, Prints & Cards



39

**MYSTIC NICK**  
16 Carlyle Place  
Tarot Readings

40



**CAROLINE DEAR**  
7 Pitlochry Place  
Sculpture Pieces & Prints

41



**CLARABUNDA ILLUSTRATION & HOME**  
33 Rossie Place  
Illustrations of Scottish Landmarks

41



**DYLAN BIER PHOTOGRAPHY**  
33 Rossie Place  
Original Scottish Photography

41



**KAT CHISHOLM**  
33 Rossie Place  
Historic Photos of Abbeyhill

41



**PATRICIA ENOT**  
33 Rossie Place  
Ceramics

41



**BECKA'S INSECTS**  
33 Rossie Place  
Spider & Insect Creations



41



**IAN GRAHAM**  
33 Rossie Place  
Woodcraft Items for the Home

41



**JULIAN HORX**  
33 Rossie Place  
Digital Illustrator

41



**MINUET WORKSHOP**  
33 Rossie Place  
Bookbinding & Design Studio

41



**ACORN PRINT STUDIO**  
33 Rossie Place  
Printmaker & Illustrator

41



**PIPPA LYNOTT**  
33 Rossie Place  
Multi-disciplinary Artist

41



**KARL MACRAE - HE'S SEW HAPPY**  
33 Rossie Place  
Contemporary Embroidery Artist

41



**ADRIANA DE MATOS ARTWORK**  
33 Rossie Place  
Wildlife Illustrations

41



**NUTMEG GLASS**  
33 Rossie Place  
Hand Blown Contemporary Glass

41

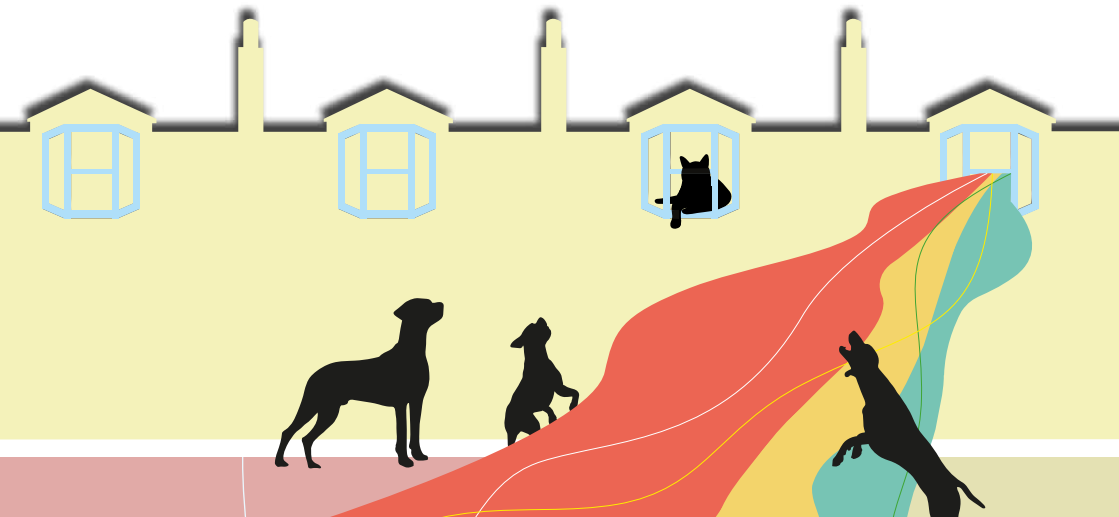


**PIXIEARTIST**  
33 Rossie Place  
Oil & Acrylic Paintings

**HOSTED UNTIL  
END SEPTEMBER**



**ALAN MCGOWAN**  
The Regent Bar, 2 Montrose Terrace  
Portrait Paintings





*A display of some of last year's amazing raffle prizes!*

## RAFFLE

Did you know we have a raffle every year? The exhibiting artists and the local businesses donate amazing prizes from original artwork to meal vouchers. All proceeds go towards the festival and mural projects.

Buy tickets the Hive Festival Hub on Rossie Place – £2 for one strip or three for £5. Prizes will be drawn on Sunday 17th. Please support us by popping along to say hello. Remember you have to *Bee* in it to win it!

## DOZENS OF PRIZES TO BE WON!

All kindly donated by our wonderful artists and local businesses!

## ABBNEYHILL PHOTOGRAPHIC EXHIBITION

Interested in our local history? *Bee* sure to pop along to the Hive Festival Hub to explore the social, industrial and transport history of Abbeyhill through a growing community photographic archive of life in Abbeyhill.

*Lady Menzies Place and Regent Place, Edinburgh.*



# History tours for locals

## explore your city's past



For details, dates and tickets search Eventbrite for 'Edinburgh Uncovered' or scan the QR code



[www.hettyshistorywalks.co.uk](http://www.hettyshistorywalks.co.uk)

**Friendly : Knowledgable : Insightful : Engaging**

See opposite page for more information on Hetty's walking tours throughout the Colony of Artists Festival.



"I attended one of Hetty's tours as a part of the Abbeyhill Colony of Artists Festival and I can only commend Hetty's knowledgeability and wit. I am seeing my neighbourhood with completely new eyes. Thanks so much. Hetty for giving your time and expertise to the festival. definitely hoping to be on another tour of yours soon!"

- Jessica McClure, 19 Sept 22

## FREE ABBEYHILL MURAL AND LOCAL HISTORY WALKING TOURS

We are delighted to welcome back local historian, Hetty Lancaster who will be offering **FREE** short walking tours of six of the COA Murally People's Abbeyhill murals on both Saturday and Sunday. The tours are a chance to discover the history behind some of the areas many bright and colourful murals as well as an opportunity to learn more about the history of the Abbeyhill Colonies.

### Saturday and Sunday Tour Times

11.00am; 12.30pm; 2.00pm; 3.30pm and 5.00pm (tours last approximately one hour).

### Tour Numbers

Places will be limited to a maximum of six on each tour.

### Registration

You can register for a specific tour at the **RAFFLE** table at the Hive Festival Hub at any point during the day. Walk-ins are welcome but not guaranteed a space.

### Starting Point

The starting point for the tour is the Electrical Colonies mural (M1 on map, page 20) beside the Hive Festival Hub at the end of Rossie Place. Please arrive 10 minutes before your registered start time – if you do not arrive five mins before the tour starts your place will be given away.



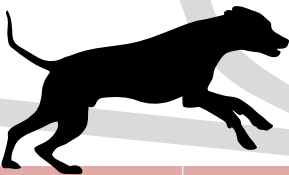
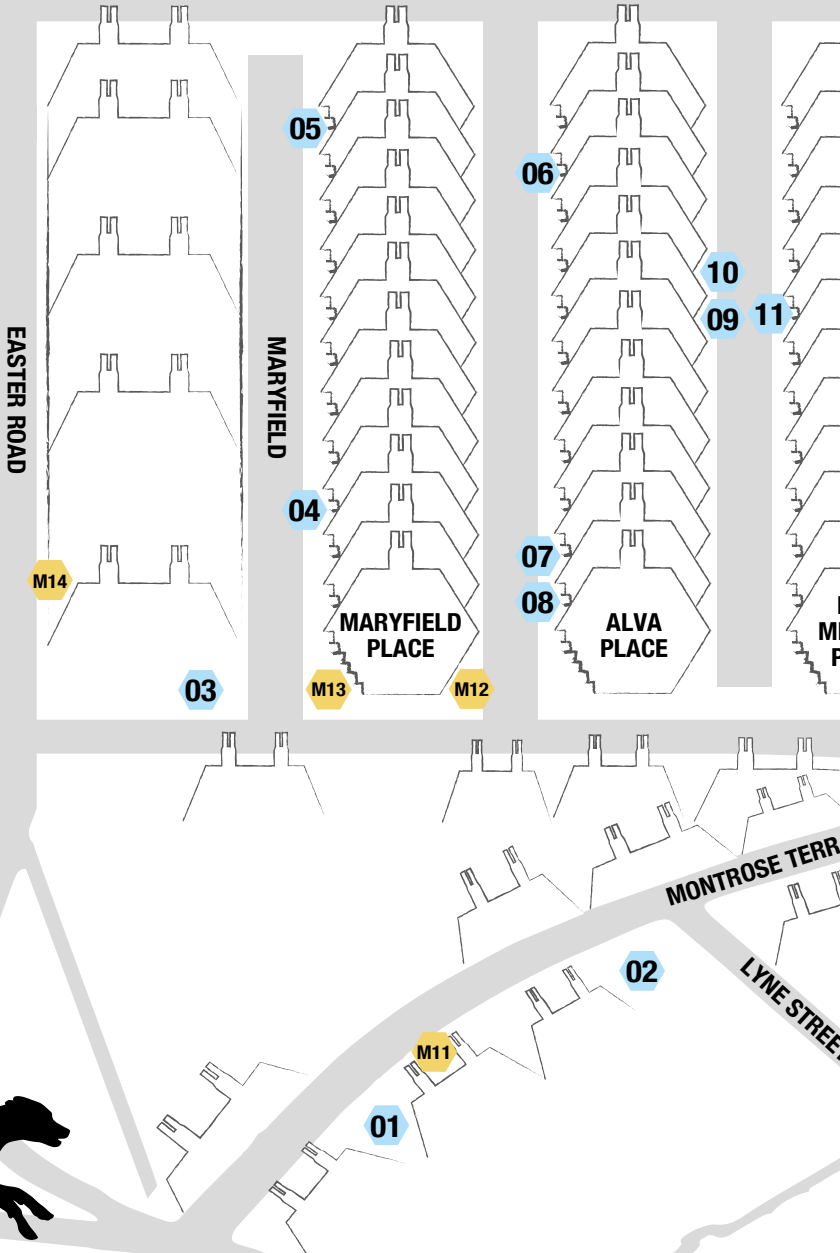
'Electrical Colonies' mural.



M16  
M15

To help you navigate, look out for the venue signs on each street. A reminder that each colony street name is the building – so this means each side of a colony street has a different street name! It's confusing so just follow the venue signs!

M17  
MONTGOMERY STREET  
M18





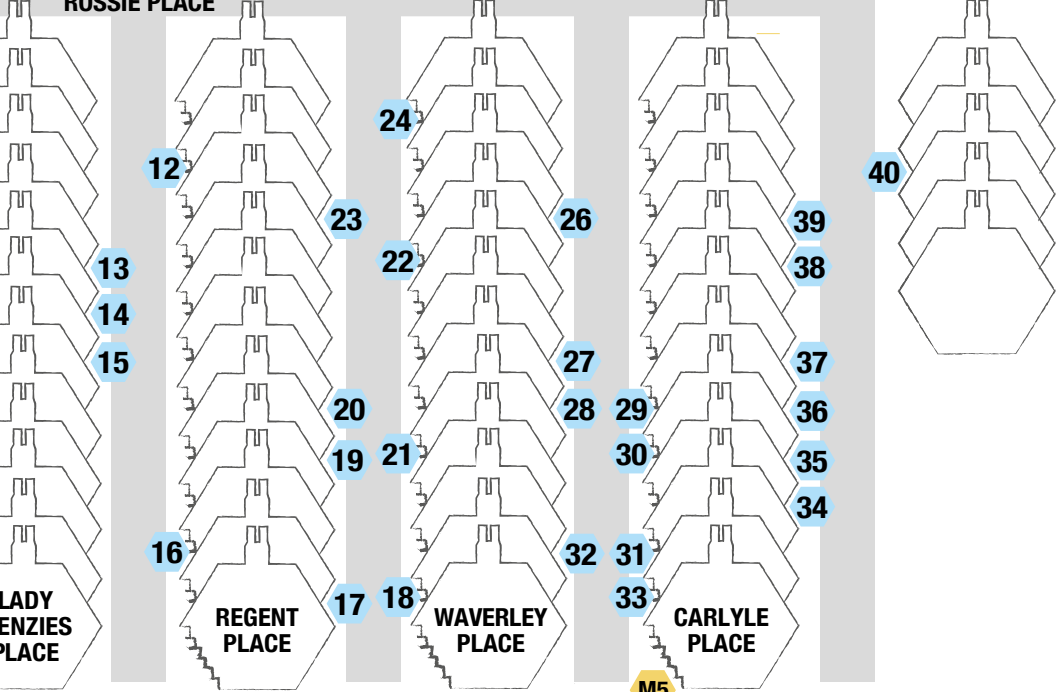
RAFFLE

41

Campervan Brewery  
and Holland House present  
**THE HIVE  
FESTIVAL HUB**



ROSSIE PLACE



LADY ENZIES PLACE

REGENT PLACE

WAVERLEY PLACE

CARLYLE PLACE

LONDON ROAD



ACE

ABBEEY STREET

Bellfield Brewery  
46 Stanley Place



Abbeyhill  
Primary School  
Abbey Street  
(Friday only)

KEY:



ARTIST VENUES



MURAL TRAIL



# ABBEEYHILL

FRIDAY ONLY



## ABBNEYHILL PRIMARY SCHOOL CELEBRATING 15 YEARS

Abbeyhill Primary School and the Colony of Artists mark a significant milestone in 2023. Since 2008 we have been opening the doors of the Abbeyhill Primary School for our festival weekend in order to showcase the talents of a new generation of artists and their inspiring class teachers. It was a leap of faith by the school and COA organisers to open up the school gymnasium in 2008 and little did we know that this unique collaboration between the community and the school would see thousands of children involved in various arts programmes for 15 years and lay the foundations of the only artists-in-residence programme in Scotland.

We knew we were doing something special in 2013 when Education Scotland happened to inspect the school during the buzzing, joyful weeks of preparations for the festival weekend. A glowing report followed. It encouraged the school and the COA to strengthen this 'innovative approach' to community life and the expressive arts through its links with the local festival.



All of the hard work put in by the children, the academic staff and the COA organisers for that first 5 years laid the foundations for **"A is for Abbeyhill"** – the only professional artists-in-residence school programme in Scotland. Inspired by what she saw,





independent curator Iliyana Nedkova and one of the parents of the school, developed this programme which itself is celebrating its 10th anniversary.

**So, join us for a special Colony of Artists Garden pARTy at the school playground on 15 September 2023 from 12.30-3.30pm to celebrate.** You'll have the chance to meet



10 resident artists and their young co-artists as they display and perform their projects. There will be a family ceilidh, an outdoor cinema and a mural trail. Sample the sweet and savoury refreshments at the pop-up art cafe and have a treat at the ice cream van!

Let's ensure that the arts are a primary ingredient of our primary school education, that children continue to gain access to contemporary and traditional visual and performing arts.

**Let us celebrate the people who made all of this happen – thank you to each an every one of you.**

Let's celebrate 15 incredible years and many more to come!



Come and join us for

## *Abbeyhill Colonies Advent 2023*

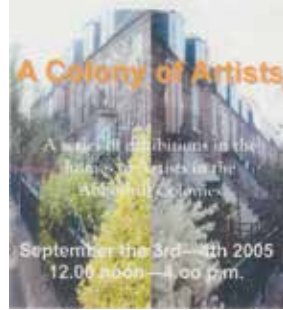
The Colony of Artists and Abbeyhill Advent are teaming up this year to bring you Christmas in Abbeyhill. The Colonies will be transformed into a colourful advent calendar with brightly decorated windows lit up every evening from the 1st December to Christmas Eve.

To launch our event we will have a Colony Christmas Gathering in late November.

To get involved, find how to participate or find out more

Email: [abbeyhilladvent@gmail.com](mailto:abbeyhilladvent@gmail.com)   @abbeyhilladvent





2005



2006



2012

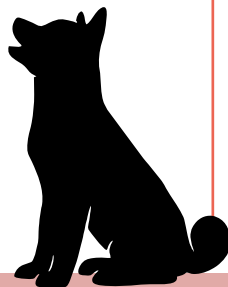


2013

## OUR STORY

The Colony of Artists Festival was born in 2005, inspired by the Pittenweem Arts Festival and the co-operative history of the Edinburgh Colonies. From these humble beginnings (add comma after s) in 2005 where only nine artists exhibited, we are now in our 18th year with 75 artists taking part in COA23.

This co-operative spirit has been maintained throughout the years by many wonderful and inspiring people, with Bill Mazur and Kat Chisholm leading the way since 2008. It really has taken a community to build this event and we look forward to many more years sharing our homes and gardens with you.



2018



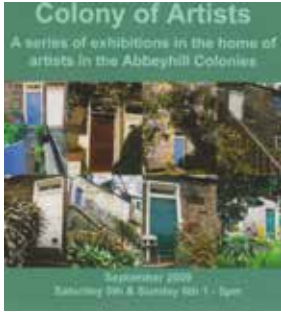
2019

## OUR BROCHURES THROUGH THE YEARS

We hope you enjoy seeing our brochure covers from the past 18 years. We've worked with incredible designers, with different styles, who all bring something new to what the Abbeyhill Colonies and the festival mean to them. Do you have a favourite?



2008



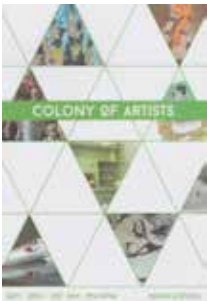
2009



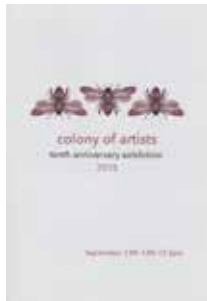
2010



2011



2014



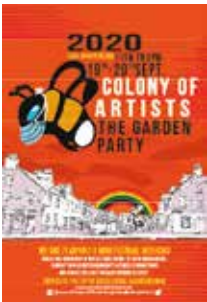
2015



2016



2017



2020



2021



2022



2023



**2023 Committee members**

Kat Chisholm, Nick Gardner, Felix Haslimeier, Jenny Haslimeier, Bill Mazur, Iliyana Nedkova, Lorraine Pritchard, Christina Robertson, Gordon Wilson.

**RELAX**  
**RELATE**  
**REWIND**  
**REALALE**

**THE**  
**REGENT** **BAR**  
**PROUD** **Support** **Colony Of Artists**

**2 Montrose Terrace**  
**Edinburgh EH75DL**

**Tel: 0131 6618198**



*Lady Menzies Place and Regent Place, Edinburgh.*

## A BRIEF HISTORY OF THE ABBEYHILL COLONIES

The Abbeyhill Colonies date back to 1867 when a dispute over working hours was led by the Edinburgh Cooperative Building Company (ECBC), who took the beehive as their symbol, and sought to provide homes for workers, built by workers. Unusually for the period, women could invest and had the same rights as male investors.

Taking a decade to complete, each terrace provided high quality accommodation and amenities, a lower and upper dwelling and external stairs allowing each dwelling a front door and garden - something that was typically beyond the pocket of lower-class families.

The streets are named and numbered according to the building, rather than the road between them. This made perfect sense



*1930's courtesy of local Abbeyhill Colonies resident Jackie Sewell who is pictured front row, second left.*

at the time, as each row was completed before building the next, but causes much confusion for visitors today!

160 years after they were built, the Abbeyhill Colonies continue to have a strong sense of community and are home to many modern-day artists giving them a new sense of identity.



**Jackson Hart** Plumbing and Heating Engineers



## DESIGNING SPACES TO ENHANCE YOUR LIFE

Established 1988 , we are a small family run business located in Abbeyhill with a focus firmly placed on providing a friendly and reliable service to our customers.

49-51 Montrose Terrace Edinburgh, EH7 5DJ

Phone: 0131 652 6020

Email: [office@jacksonhart.co.uk](mailto:office@jacksonhart.co.uk)

[www.jacksonhart.co.uk](http://www.jacksonhart.co.uk)

Proud to support #COA2023



Electrical Supplies: Home & Commercial

35 Rossie Place  
Edinburgh  
EH7 5RX  
TEL - 0131 661 7141



Proud to sponsor  
**THE HIVE**  
The Colony of Artists  
Festival Hub



# Colony OF Artists mural trail

Abbeyhill





**M1**  
**ELECTRICAL COLONIES (2020)**  
35 Rossie Place



**M2**  
**INDUSTRIAL ABBEYHILL (2019)**  
33 Rossie Place



**M3**  
**KEEP WALKING (2022)**  
Abbeyhill Footcare, 41 London Road (2022)



**ABBEEYHILL FOOTCARE**  
0131 661 4196  
PODIATRIST



**M4**  
**OFF TO THE RACES (2021)**  
ScotBet, 41a London Road



**M5**  
**COA WELCOME (2019)**  
London Road at Carlyle Place





**M6**  
**CHERRY'S CAFE (2020)**  
45 London Road



**M7**  
**GREEK DELIGHTS (2022)**  
Anna's Delicacies, 6 Earlston Place



**M8**  
**EDINBURGH BREWING HISTORY (2020)**  
Bellfield Brewery, 46 Stanley Place





**M9**  
**FOR THE FREE (2021)**  
Bellfield Brewery, 46 Stanley Place



**M10**  
**THEMIS (2022)**  
Collins & Co, 18 Cadzow Place



**M11**  
**OMBRE GOLD (2022)**  
Escape Hairdressing, 22 Montrose Terrace



**M12**  
**WELCOME TO THE COLONIES (2021)**  
Maryfield Place at London Road



**TYTLER BALLOON RIDE (2021)**  
Maryfield at London Road



**FRUIT & VEG (2020)**  
Easter Greens, 4 Easter Road



**SPREADING YOUR WINGS (2022)**  
25 Easter Road



**CATS RULE (2022)**  
Lothian Cat Rescue, 23 Easter Road

M17



**MONTGOMERY STREET EXTRAVAGANZA!**  
Montgomery Street Park

In 2022 COA the Murally People worked with the Friends of Montgomery Street Park to totally transform the park with nine different murals from various artists. It was a huge undertaking and we love the individual nature of each mural – so thank you to everyone who made this possible and came along over the weekend!



**HILLSIDE BOWLING CLUB (2020)**  
Montgomery Street (across from the park)



**SWIFT PROJECT WITH RSPB**

We partnered with the RSPB Swift Cities Project over the past few years to bring awareness to the plight of our urban wildlife.

All of our murals have been updated with swifts, and we also installed swift boxes to encourage our feathered friends to roost. We need to protect nature in our urban landscape and this is an example of a community taking action for nature on their doorstep.



M20



**MONTROSE TERRACE HOARDINGS (2021)**

**RIP MONTROSE TERRACE HOARDINGS**

Sadly, these are no longer with us, but we want to thank all the lovely street artists who came along to transform our neighbourhood, if only temporarily, over the past couple of years.

M21



**TSB BUILDING (2022)**

**RIP TSB LONDON ROAD HOARDINGS**

In 2022, in collaboration with Vue Art based in Leith, we had a graffiti jam at the old TSB building on London Road. Thank you to everyone who took part.

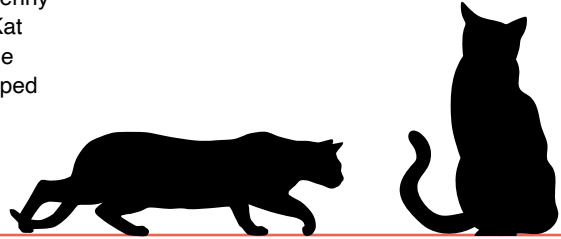
## MURAL PROJECT THANK YOU

Thank you to our funders: People's Postcode Trust, Scotmid Community Grant, SafeDeposits Scotland Community Fund. Big hugs and thanks to all the businesses who have supported us - those who advertise, donate and those who put their trust in us to create magic in our rather special corner of Edinburgh.

The lead Murally People (Bill Mazur, Jenny Haslimeier, Christina Robertson and Kat Chisholm) would like to thank everyone (you know who you are) who have helped

make these murals possible, from a few brushstrokes to hours of practical help to design inspiration, we couldn't have done it without you.

You can find out more though if you're very keen by visiting our website. We hope you've enjoyed our work to date. It's been a pleasure.



DISCOVER IN 2013

*The*  
**SAFARI**

ABBEYHILL LOUNGE EDINBURGH

QUALITY PROVISIONS & LIBATIONS

supporting abbeyhill's colony of artists  
and its visitors since 2013 with food and  
drink masterpieces... forever trying to exhibit  
a refreshingly fine culinary landscape

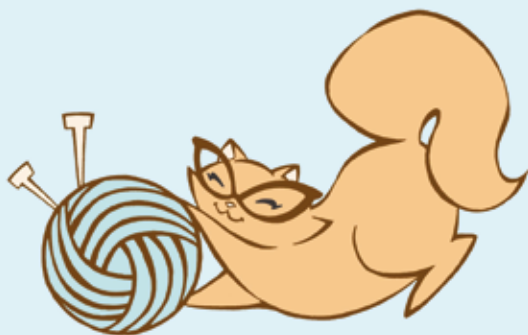
Open from 12pm - 21 cadzow place, abbeyhill, eh7 5sn -  
0131 861 4741 info@thesafarilounge.co.uk



# CITADEL BOOKS

41 MONTROSE TERRACE

Run by author Alan Spence (Edinburgh City Makar)  
Citadel has a wide range of new and quality secondhand books  
as well as cards and fine art prints.  
Pop in and browse. (You may just find what you're looking for!)



## Ginger Twist Studio

An adorable wee yarn shop practically bursting at the  
seams with squishy wool, fibre and patterns...

### Special knitwear sample sale all weekend

[www.gingertwiststudio.com](http://www.gingertwiststudio.com)

11 London Rd, Edinburgh





# Collins & Co

DEFENCE LAWYERS

0131 661 3210

specialists in

CRIMINAL DEFENCE

CHILDREN'S HEARINGS

ROAD TRAFFIC OFFENCES

Collins & Co Defence Lawyers,

18 Cadzow Place,

Edinburgh, EH7 5SN



[www.collinsandcolawyers.com](http://www.collinsandcolawyers.com)

[mail@collinsandcolawyers.com](mailto:mail@collinsandcolawyers.com)

proud to support



ART AND VINTAGE

Cafe/ Shop/ Gallery

3 Lyne Street

9.30am-4.30pm every day



## Hillside Bowling Club

9a Brunton Place  
Edinburgh, EH7 5EG  
Phone: 0131 556 5727

Established in 1870 Hillside Bowling Club older than Heart of Midlothian and Hibernian Football Clubs is the hidden gem of Abbeyhill, located between London Road, Brunton Terrace, Montgomery Street and Wellington Street it's something many people are unaware of, pop in and have a look we are always looking for new members.

**Bowling season is between April to October with the club also open during winter weekends for socializing.**





## THANK YOU

It is a lot of hard work and a labour of love to put on the Colony of Artists festival weekend.

Firstly, we would like to thank our 2023 funders who include: The People's Postcode Trust, SafeDeposits Scotland Community Fund and ScotMid Community Grant.

There are also many local businesses who go above and beyond to help, so thank you to Holland House Electrical who allow us to take over their car park for our Hive Festival Hub, The Safari Lounge, Abbeyhill Primary School, Cornelius Beer and Wine, Hillside

Bowling Club and to all the businesses who advertise and those that allow us to decorate their windows and premises in the lead up to the festival.

Our biggest thank you goes to the local Abbeyhill Colony residents who have supported us for 18 years and have allowed us to take over their streets for one weekend a year. You are all amazing!

Lastly, many thanks to the general public who have come along and supported us for all these years. Here's to many more!

[www.colonyofartists.co.uk](http://www.colonyofartists.co.uk)

   @colonyofartists






This work has been made possible by an award from People's Postcode Trust, a grantgiving charity funded entirely by players of People's Postcode Lottery.

*\* The Colony of Artists accepts no liability in case of illness or accidents and individual venues and/or gardens are responsible for their own risk assessment. By entering individual venues, you are entering into a contract with the venue.*



A weekend of exhibitions, installations, walking tours, live music, food and even a pop-up bar - hosted in gardens, homes, businesses and the Hive Festival Hub at Holland House. The Abbeyhill Colonies are situated near the junction of Easter Road and London Road in the east of the capital.

[www.colonyofartists.co.uk](http://www.colonyofartists.co.uk)

   @colonyofartists

